

# 2025 Annual Report on District Programs and Initiatives



## Ongoing Programs



### Youth Education Program

**352** presentations for  
**7,910** children  
**61** Curriculums for  
**1,358** children  
Writing Campaign  
Pop Can Tab Drive  
Fair Booth Display



### Recycling Drop Off Program

**15** drop-off sites open  
**24hrs/365 days**  
**1,202,320** lbs  
recycled  
**\$169,811.97** program  
costs  
**\$0.14** cost/lbs



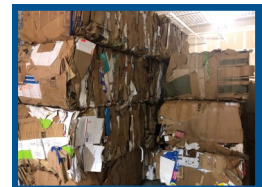
### Residential Scrap Tire Voucher Program

**2,549** tires recycled  
**110,663** lbs collected  
and recycled  
**\$15,101** program cost  
**\$5.92** cost/tire  
**\$0.14** cost/lbs



### Freon Containing Appliance Voucher Program

**154** appliances  
recycled  
**12,320** lbs collected  
and recycled  
**\$3,255** program cost  
**\$0.26** cost/lbs



### Industrial/Commercial Technical Assistance

-Technical assistance  
offered by request.  
-Numerous phone  
calls

## Special One Day Collection Events



### Household Hazardous Waste and Paint Collection Program

**592** households or  
**1,190** residents participated  
**72,213** lbs collected or  
**122** lbs per household  
**65,645** lbs recycled or  
**111** lbs per household  
**\$39,836.38** cost of event or  
**\$67.29** per household  
**\$0.54** cost/lbs



### Farm Tire Collection and Recycling Program

**44** farms or  
**88** residents participated  
**773** tires or  
**99,000** lbs collected and  
Recycled or  
**2,250** lbs per farm  
**\$15,604** cost of event or  
**\$355** per farm  
**\$0.16** cost/lbs



### Electronic Waste and Television Collection and Recycling Program

**357** participants and governmental  
offices  
**39,808** lbs collected and  
recycled or  
**112** lbs per participant  
**\$16,459** cost of event or  
**\$46** per participant or  
**\$0.41** cost/lbs

**For Additional Information Contact: Phone:** 419-282-4338 **Email:** jskora@ashlandcounty.org  
**Website:** [www.https://www.ashlandcountyoh.us/county-services/solid-waste-district-home-recycling](https://www.ashlandcountyoh.us/county-services/solid-waste-district-home-recycling)